

NOAA Hydrographic Services Review Panel *eHydro Software Local* *Perspective*

Philip Wolf

Chief, Spatial Data Branch

Justin West

Cartographic Technician, Spatial Data
Branch

Charleston District

17 September 2014



Software Overview

- Creates standardized products
- Reduces human error with processing
- Reduces production times
- Reconfigurable as missions change



Products

Distribution

- Charts
- Channel Condition Reports (CCR)

Planning and Analysis

- Channel Availability Reports (CHA)
- Channel Availability by Quarter (CAQ)
- Channel Condition Index (CCI)



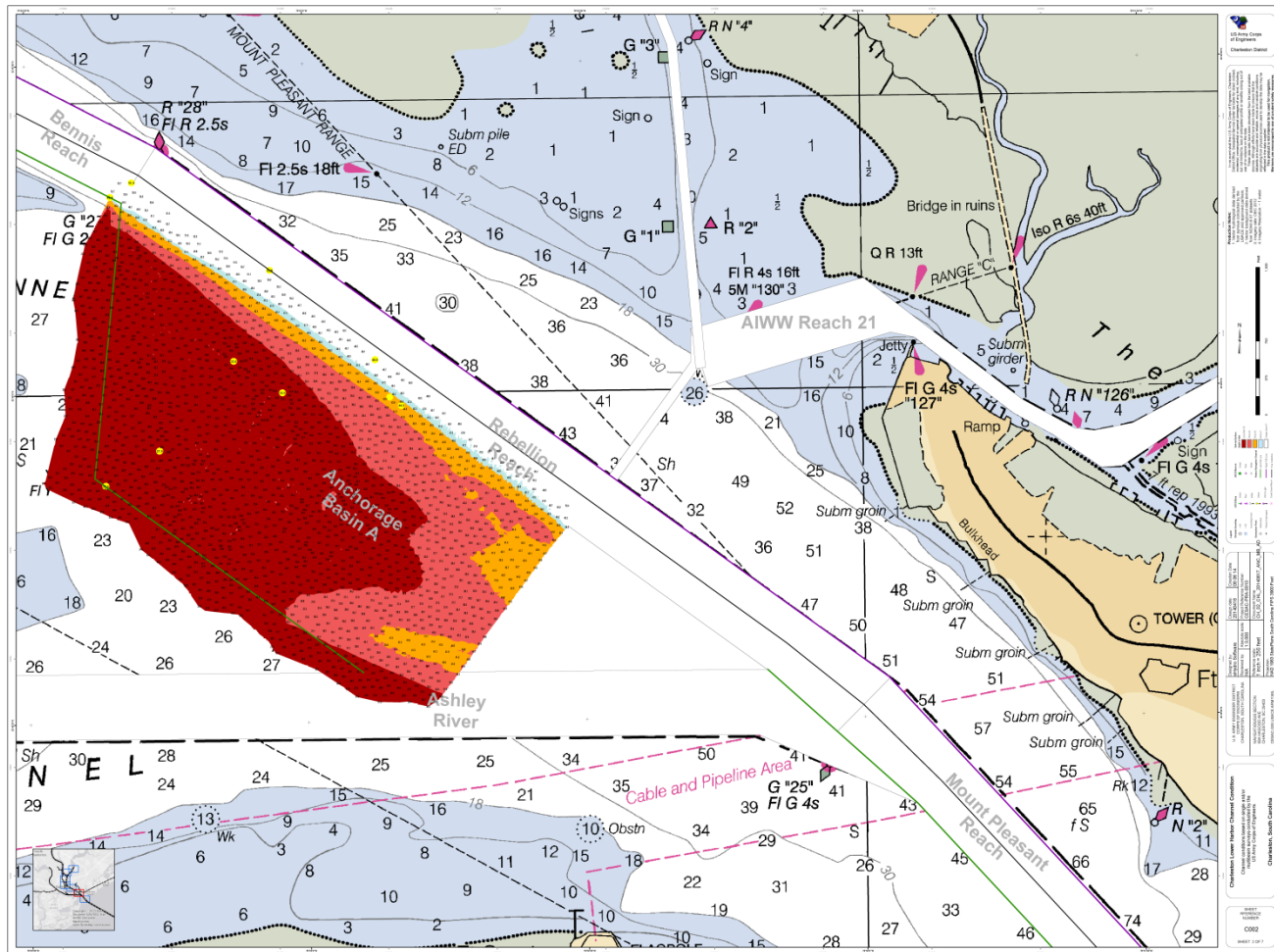
Channel Condition Report

- Channel Condition Report Form 4020-R or 4021-R
- Each sounding identified automatically based on channel quarter geometries
- Base data can be modified as the channel information changes
- Primary product distributed to customers

NAME OF CHANNEL	DATE OF SURVEY	AUTHORIZED PROJECT			LEFT OUTSIDE QUARTER (feet)	LEFT INSIDE QUARTER (feet)	RIGHT INSIDE QUARTER (feet)	RIGHT OUTSIDE QUARTER (feet)
		WIDTH (feet)	LENGTH (miles)	DEPTH (feet)				
Daniel Island Reach 1342+77 to 1412+71	05-29-2014	880	1.30	45	47.5	46.6	42.4	35.7
Daniel Island Bend 1412+71 to 1440+86	05-29-2014	800	0.50	45	43.2	50.2	51.2	49.7
Clouer Creek Reach 1440+86 to 1509+08	05-29-2014	600	1.30	45	46.6	48.2	48.2	45.8
Navy Yard Reach 1509+08 to 1566+65	05-29-2014	600	1.10	45	47.3	47.6	47.0	45.0
North Charleson Reach 1566+65 to 1615+95	05-29-2014	500	0.90	45	48.0	49.9	48.8	42.4
Filben Creek Reach 1615+95 to 1664+72	05-29-2014	500	0.90	45	45.5	49.7	50.4	47.0
Port Terminal Reach 1664+72 to 1701+35	05-29-2014	600	0.70	45	44.8	49.2	49.3	47.0
Ordnance Reach 1701+35 to 1720+83	05-29-2014	600	0.40	45	38.2	39.4	42.6	44.9
Ordnance Reach T.B. 1698+65 to 1720+83	05-29-2014	800	0.40	45	45.1	41.0	34.9	32.1



SAC Standard Chart Product



BUILDING STRONG®

Chart Products

- Depicts the channel geometries along with the survey information
- Templates created for each project area and populated with District developed symbology and NOAA Raster Navigation Charts
- Individual survey data input into template and customizable for different outputs
- Can be output in PDF or MDX formats



eHydro Future

- Moving towards Enterprise solution for data delivery
- Uploads to local and Enterprise level web viewers



BUILDING STRONG®

Questions?

Philip Wolf

Chief, Spatial Data Branch

Philip.M.Wolf@usace.army.mil

(843) 329-8069

Justin West

Cartographic Technician, Spatial Data Branch

Justin.I.West@usace.army.mil

(843) 329-8014

US Army Corps of Engineers Charleston District

<http://www.sac.usace.army.mil/>



BUILDING STRONG®